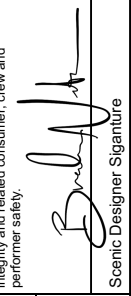


Disclaimer:
 Drawings are only meant only to illustrate ideas and are not to be used for construction. The designer does not assume any liability for structural integrity in the designs. The company selected to build the designs will assume all liability to its structural integrity and related consumer, crew and performer safety.

Scenic Designer Signature


Venue: **Jeanine Larson Dobbins Conservatory**

Stage: **Bedell Theatre**

Director: **Kitt Lavoie**

Technical Director: **L. Andrew Lopez & Brandon M. Newton**

GUYS & DOLLS

Sheet Title: **Top of Show/A1S1: Open City**

Date: **August 7, 2021**

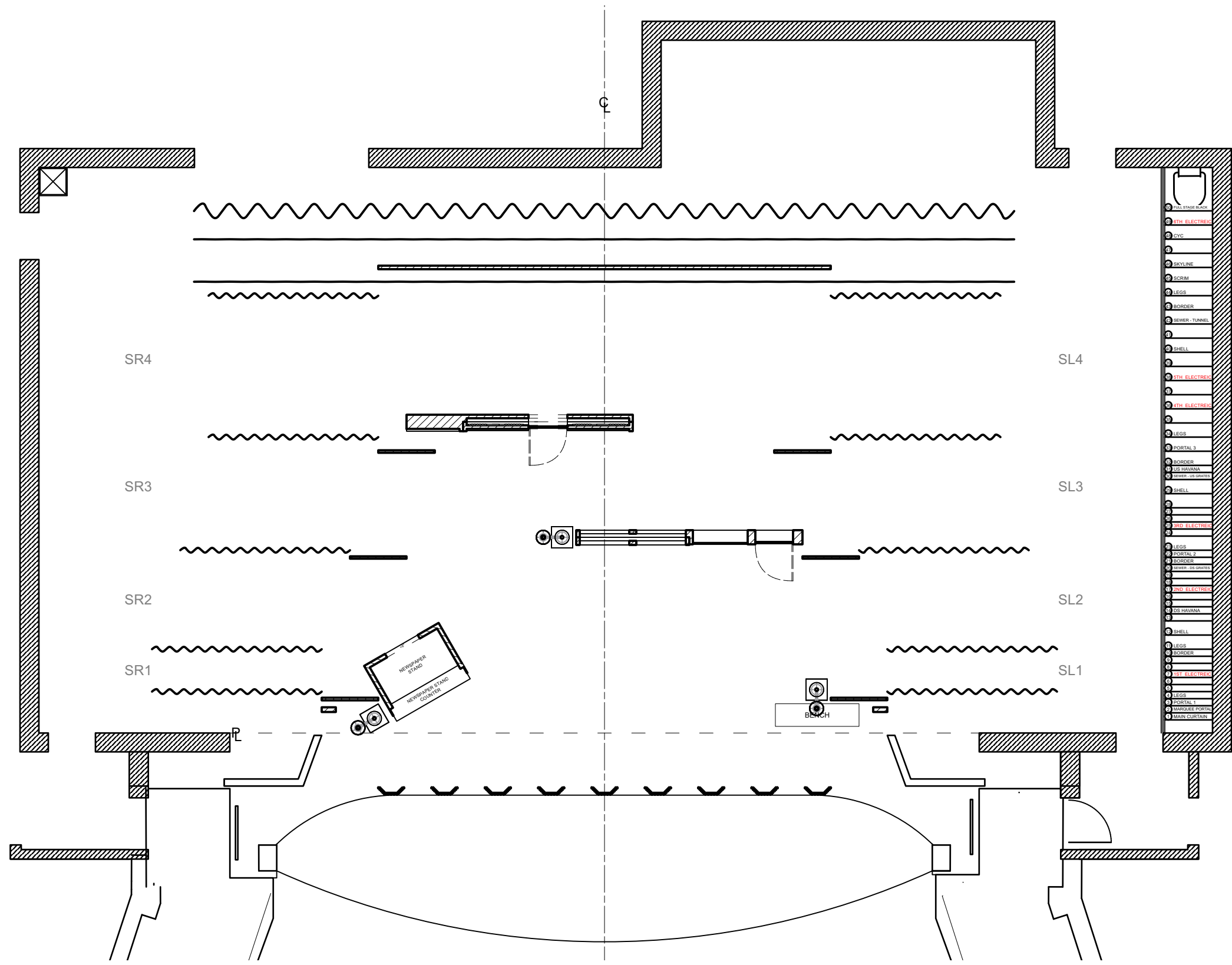
Designer: **Brandon M. Newton**

Scale: **1/8" = 1'-0"**

Drawn By: **Brandon M. Newton**

Sheet Number: **GP-0**

of: **18**



Disclaimer:
 Drawings are only meant only to illustrate ideas and are not to be used for construction. The designer does not assume any liability for structural integrity in the designs. The company selected to build the designs will assume all liability to its structural integrity and related consumer, crew and performer safety.

Brandon M. Newton
 Scenic Designer Signature

Venue: **Jeanine Larson Dobbins Conservatory**

Stage: **Bedell Theatre**

Director: **Kitt Lavoie**

Technical Director: **L. Andrew Lopez & Brandon M. Newton**

GUYS & DOLLS

Sheet Title: **A1S1: Off-Broadway 1**

Date: **August 7, 2021**

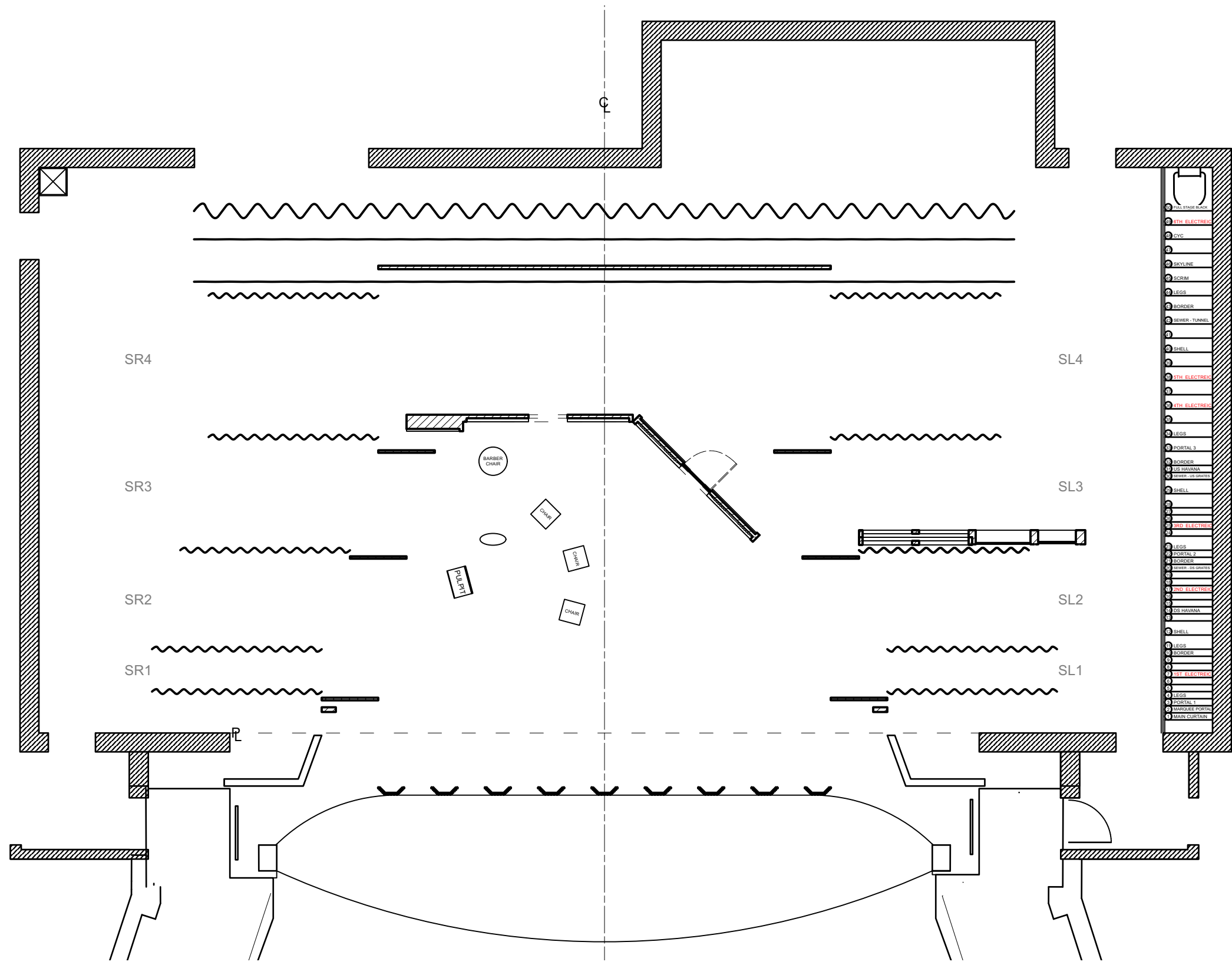
Scale: **1/8" = 1'-0"**

Designer: **Brandon M. Newton**

Drawn By: **Brandon M. Newton**

Sheet Number: **GP-1**

of: **18**



Disclaimer:
 Drawings are only meant only to illustrate ideas and are not to be used for construction. The designer does not assume any liability for structural integrity in the designs. The company selected to build the designs will assume all liability to its structural integrity and related consumer, crew and performer safety.

Brandon M. Newton
 Scenic Designer Signature

Venue: **Jeanine Larson Dobbins Conservatory**

Stage: **Bedell Theatre**

Director: **Kitt Lavoie**

Technical Director: **L. Andrew Lopez & Brandon M. Newton**

GUYS & DOLLS

Sheet Title: **A1S2: Mission Interior 1**

Date: **August 7, 2021**

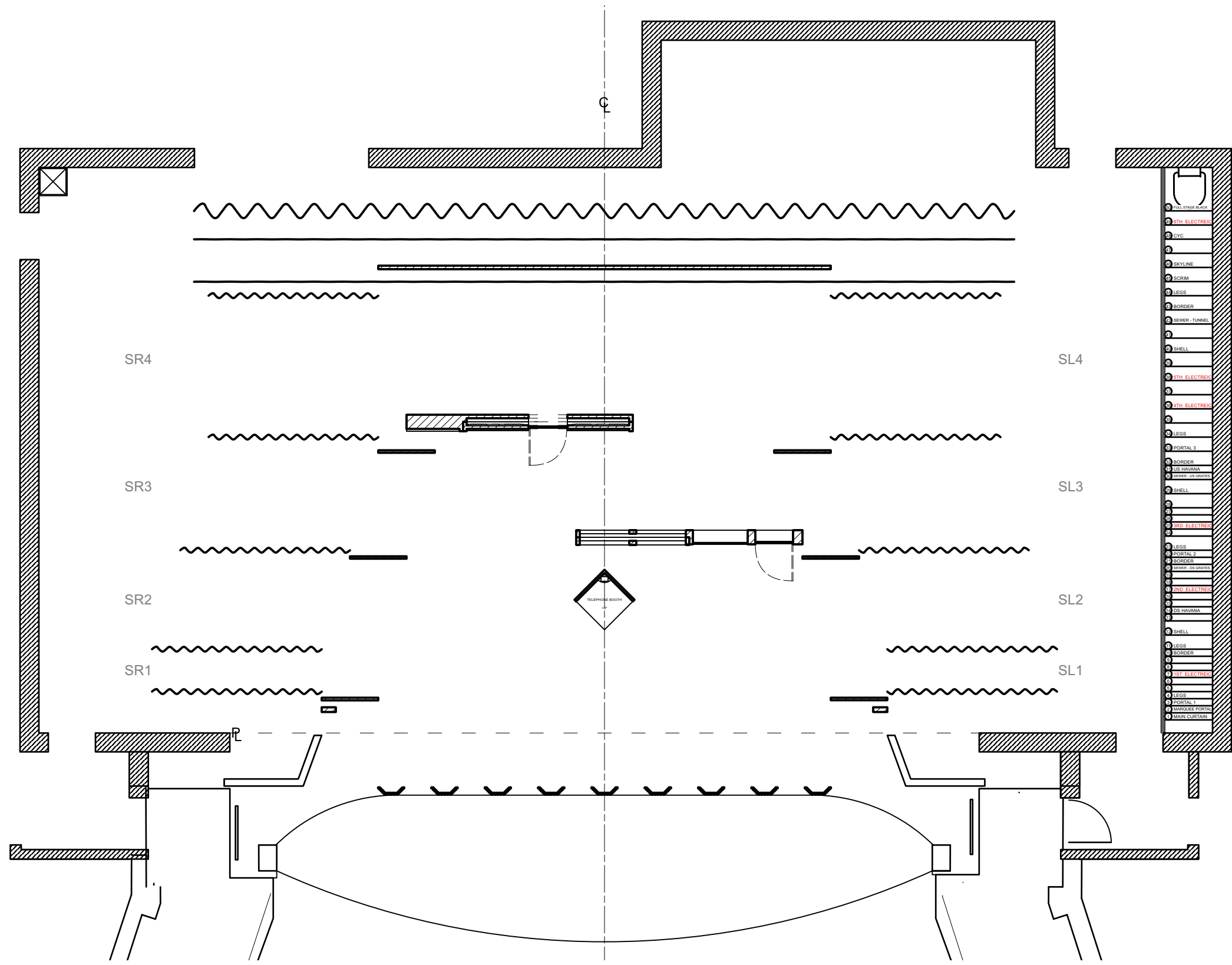
Designer: **Brandon M. Newton**

Scale: **1/8" = 1'-0"**

Drawn By: **Brandon M. Newton**

Sheet Number: **GP-2**

of **18**



Disclaimer:
 Drawings are only meant only to illustrate ideas and are not to be used for construction. The designer does not assume any liability for structural integrity in the designs. The company selected to build the designs will assume all liability to its structural integrity and related consumer, crew and performer safety.

Scenic Designer Signature

Venue: **Jeanine Larson Dobbins Conservatory**

Stage: **Bedell Theatre**

Director: **Kitt Lavoie**

Technical Director: **L. Andrew Lopez & Brandon M. Newton**

GUYS & DOLLS

Sheet Title: **A1S3: Off-Broadway 2**

Date: **August 7, 2021**

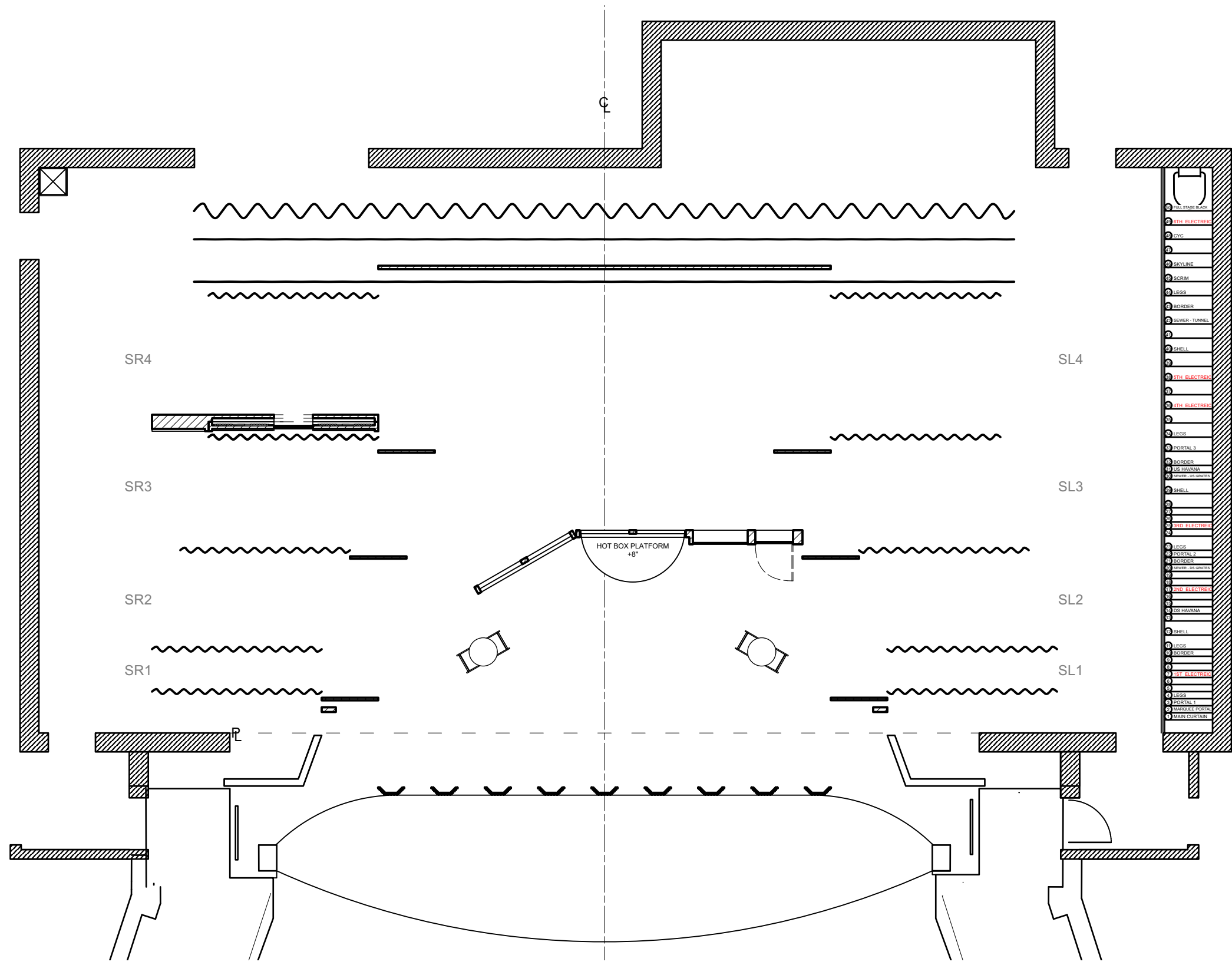
Scale: **1/8" = 1'-0"**

Designer: **Brandon M. Newton**

Drawn By: **Brandon M. Newton**

Sheet Number: **GP-3**

of 18



Disclaimer:
 Drawings are only meant only to illustrate ideas and are not to be used for construction. The designer does not assume any liability for structural integrity in the designs. The company selected to build the designs will assume all liability to its structural integrity and related consumer, crew and performer safety.

Scenic Designer Signature

Venue: **Jeanine Larson Dobbins Conservatory**

Stage: **Bedell Theatre**

Director: **Kitt Lavoie**

Technical Director: **L. Andrew Lopez & Brandon M. Newton**

GUYS & DOLLS

Sheet Title: **A1S4: Hot Box**

Date: **August 7, 2021**

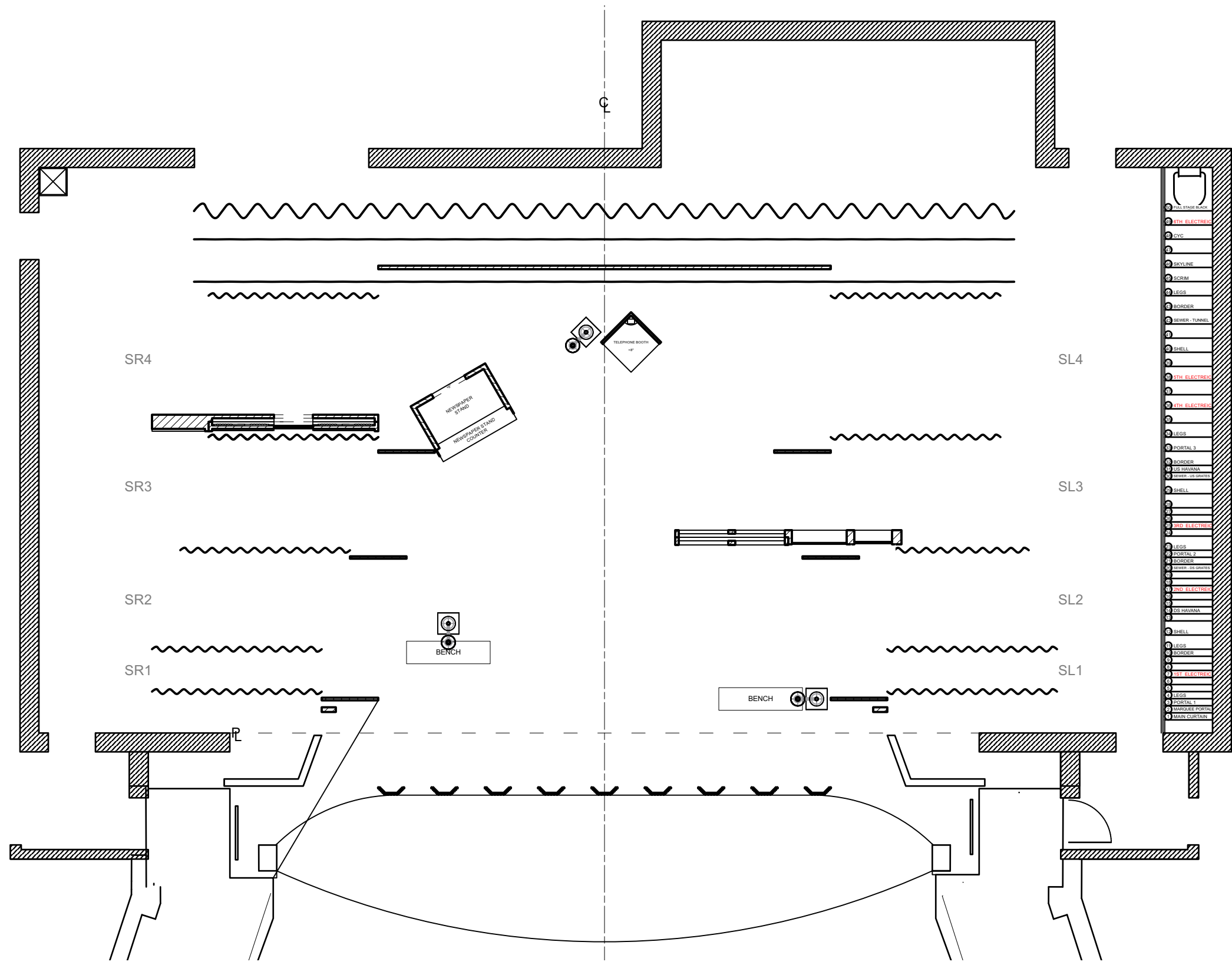
Designer: **Brandon M. Newton**

Scale: **1/8" = 1'-0"**

Drawn By: **Brandon M. Newton**

Sheet Number: **GP-4**

of 18



Disclaimer:
 Drawings are only meant only to illustrate ideas and are not to be used for construction. The designer does not assume any liability for structural integrity in the designs. The company selected to build the designs will assume all liability to its structural integrity and related consumer, crew and performer safety.

Brandon M. Newton
 Scenic Designer Signature

Venue: **Jeanine Larson Dobbins Conservatory**

Stage: **Bedell Theatre**

Director: **Kitt Lavoie**

Technical Director: **L. Andrew Lopez & Brandon M. Newton**

GUYS & DOLLS

Sheet Title: **A1S5: Off-Broadway 3**

Date: **August 7, 2021**

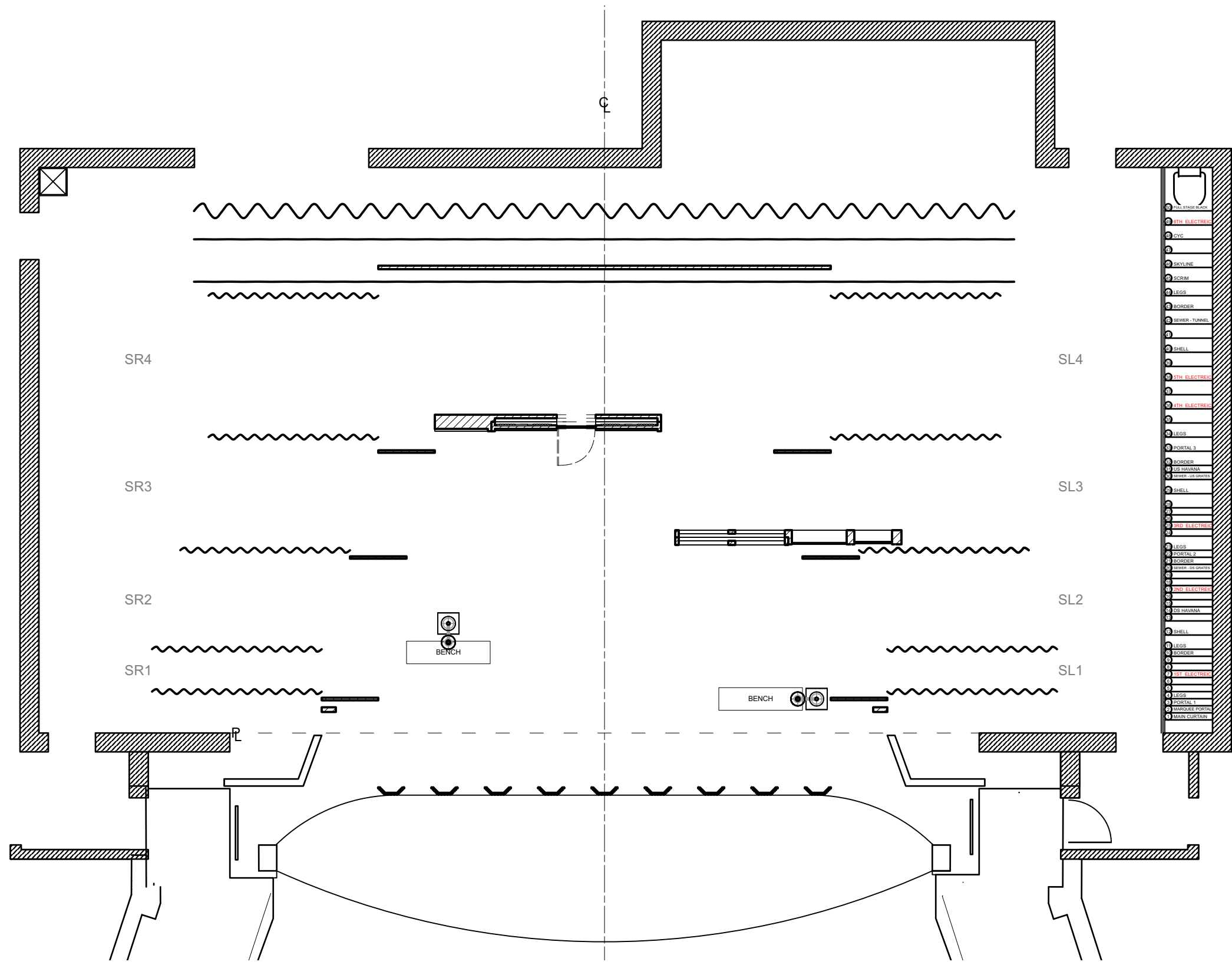
Scale: **1/8" = 1'-0"**

Designer: **Brandon M. Newton**

Drawn By: **Brandon M. Newton**

Sheet Number: **GP-5**

of 18



Disclaimer:
 Drawings are only meant only to illustrate ideas and are not to be used for construction. The designer does not assume any liability for structural integrity in the designs. The company selected to build the designs will assume all liability to its structural integrity and related consumer, crew and performer safety.

Brandon M. Newton
 Scenic Designer Signature

Venue: **Jeanine Larson Dobbins Conservatory**

Stage: **Bedell Theatre**

Director: **Kitt Lavoie**

Technical Director: **L. Andrew Lopez & Brandon M. Newton**

GUYS & DOLLS

Sheet Title: **A1S6: Mission Exterior**

Date: **August 7, 2021**

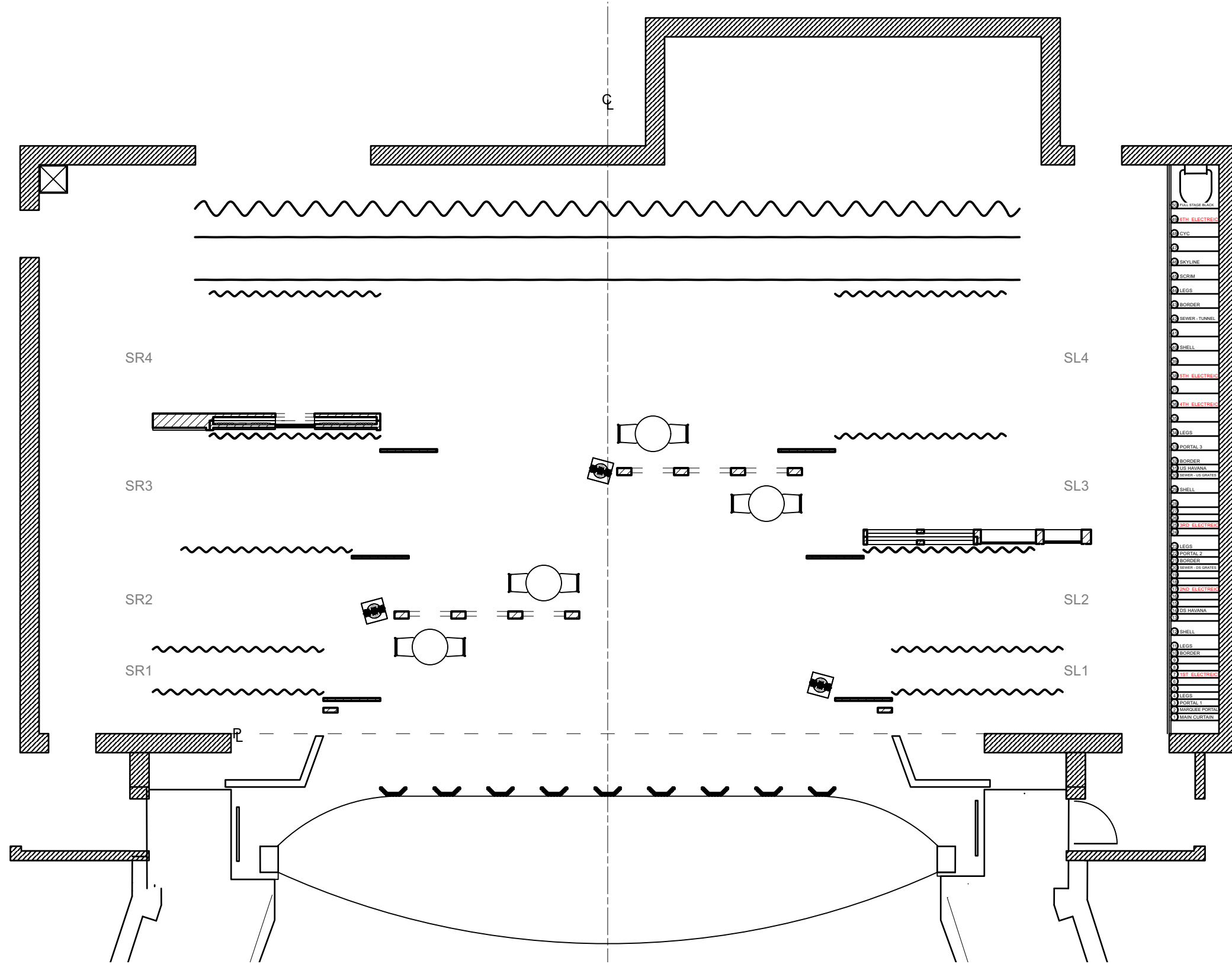
Designer: **Brandon M. Newton**

Scale: **1/8" = 1'-0"**

Drawn By: **Brandon M. Newton**

Sheet Number: **GP-6**

of: **18**



Disclaimer:
 Drawings are only meant only to illustrate ideas and are not to be used for construction. The designer does not assume any liability for structural integrity in the designs. The company selected to build the designs will assume all liability to its structural integrity and related consumer, crew and performer safety.

Brandon M. Newton
 Scenic Designer Signature

Venue: **Jeanine Larson Dobbins Conservatory**

Stage: **Bedell Theatre**

Director: **Kitt Lavoie**

Technical Director: **L. Andrew Lopez & Brandon M. Newton**

GUYS & DOLLS

Sheet Title: **A1S8: Havana**

Date: **August 7, 2021**

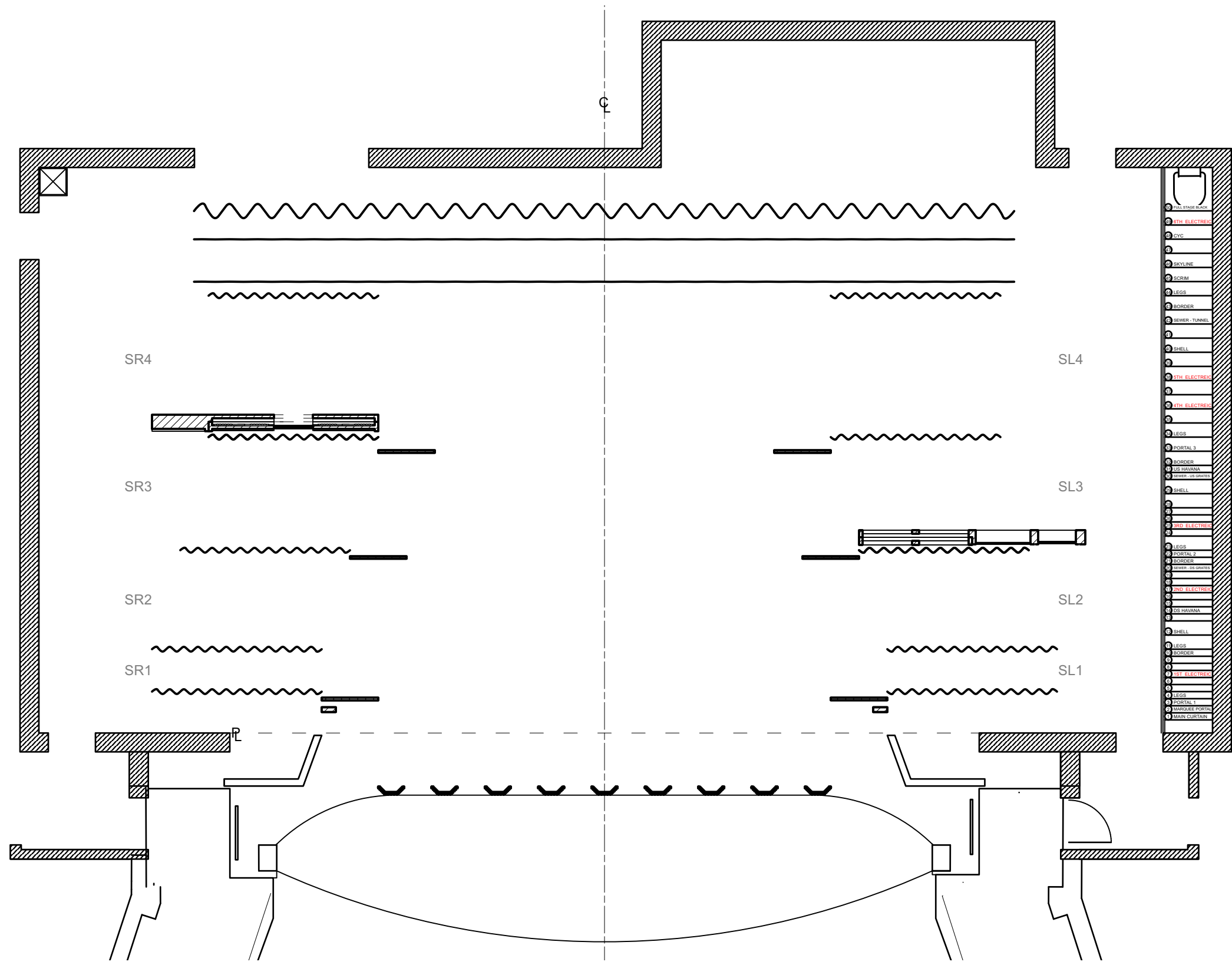
Designer: **Brandon M. Newton**

Scale: **1/8" = 1'-0"**

Drawn By: **Brandon M. Newton**

Sheet Number: **GP-8**

of 18



Disclaimer:
 Drawings are only meant only to illustrate ideas and are not intended to be used for construction. All structural elements shown in the design must be evaluated and stamped by a certified technical director before construction. The designer does not assume any liability for structural integrity in the designs. The company selected to build the Designs will assume all liability to its structural integrity and related consumer, crew and performer safety.

Brandon M. Newton
 Scenic Designer Signature

Venue: **Jeanine Larson Dobbins Conservatory**

Stage: **Bedell Theatre**

Director: **Kitt Lavoie**

Technical Director: **L. Andrew Lopez & Brandon M. Newton**

GUYS & DOLLS

Sheet Title: **A1S9: Havana Beach**

Date: **August 7, 2021**

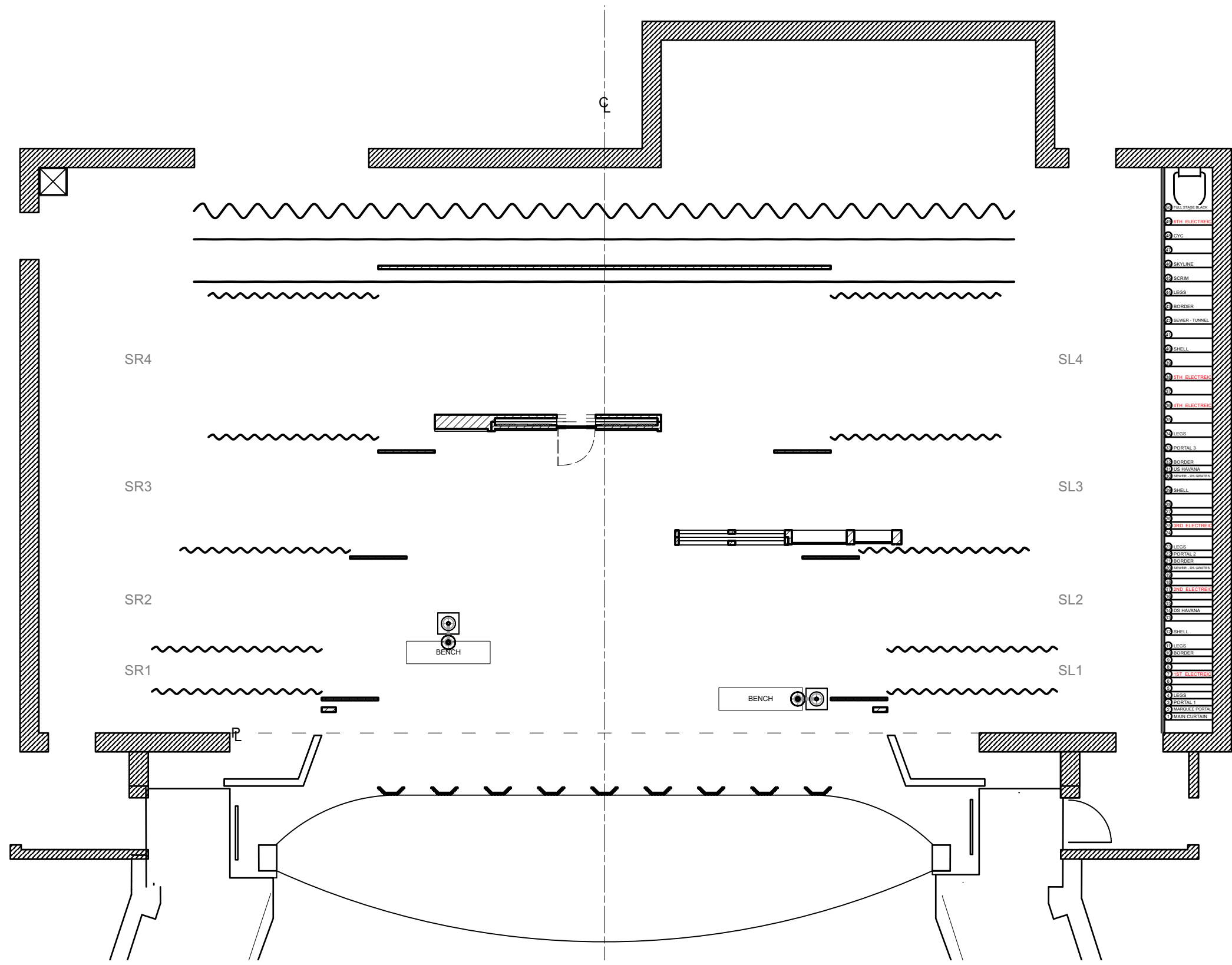
Designer: **Brandon M. Newton**

Scale: **1/8" = 1'-0"**

Drawn By: **Brandon M. Newton**

Sheet Number: **GP-9**

of: **18**



Disclaimer:
 Drawings are only meant only to illustrate ideas and are not to be used for construction. The designer does not assume any liability for structural integrity in the designs. The company selected to build the designs will assume all liability to its structural integrity and related consumer, crew and performer safety.

Scenic Designer Signature

Venue: **Jeanine Larson Dobbins Conservatory**

Stage: **Bedell Theatre**

Director: **Kitt Lavoie**

Technical Director: **L. Andrew Lopez & Brandon M. Newton**

GUYS & DOLLS

Sheet Title: **A1S10: Mission Exterior**

Date: **August 7, 2021**

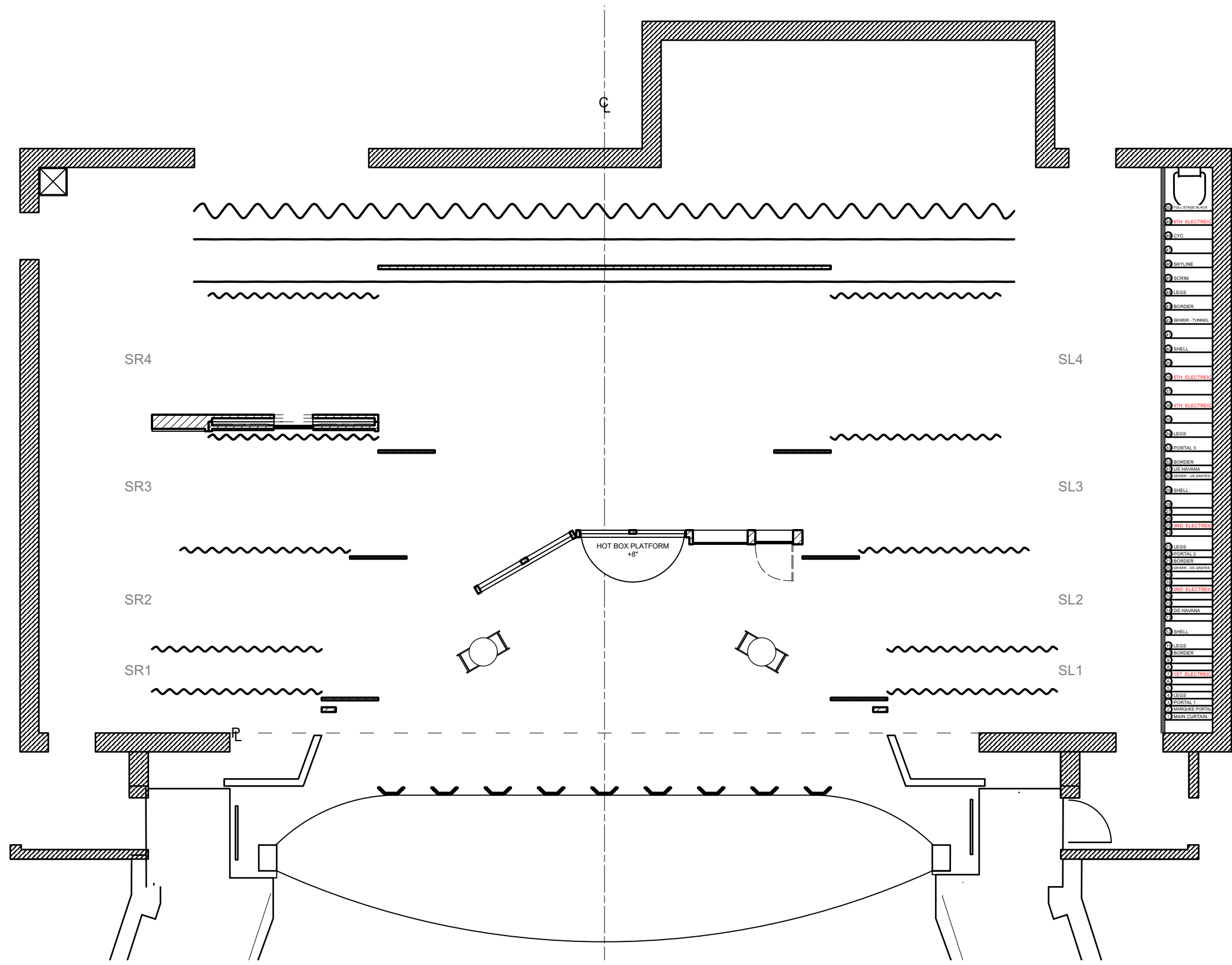
Designer: **Brandon M. Newton**

Scale: **1/8" = 1'-0"**

Drawn By: **Brandon M. Newton**

Sheet Number: **GP-10**

of 18



Disclaimer:
 Drawings are only meant only to illustrate ideas and are not to be used for construction. The designer does not assume any liability for structural integrity in the designs. The company selected to build the designs will assume all liability to its structural integrity and related consumer, crew and performer safety.

Brandon M. Newton
 Scenic Designer Signature

Venue: **Jeanine Larson Dobbins Conservatory**

Stage: **Bedell Theatre**

Director: **Kitt Lavoie**

Technical Director: **L. Andrew Lopez & Brandon M. Newton**

GUYS & DOLLS

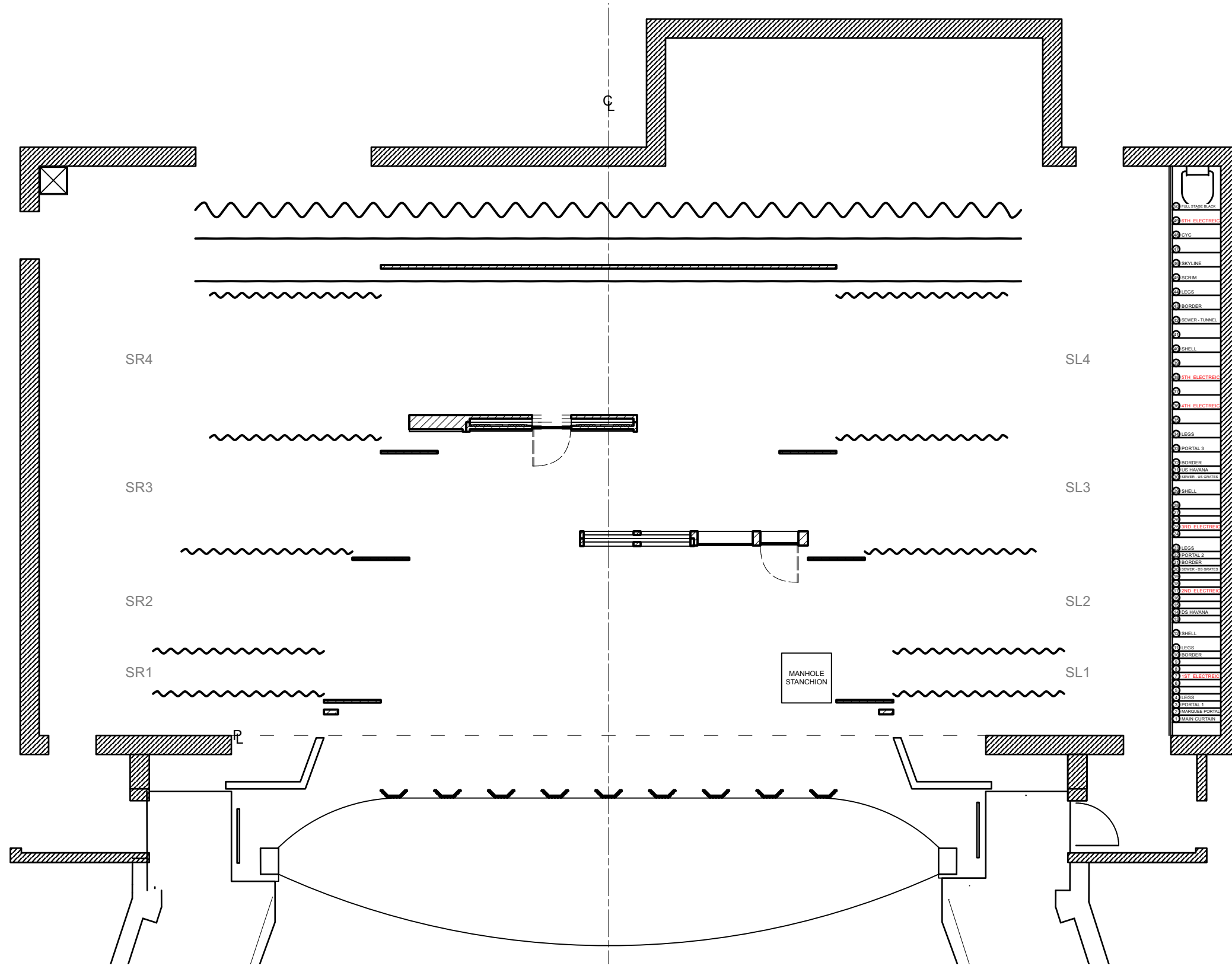
Sheet Title: **A2S1: Hot Box**

Date: **August 7, 2021**

Scale: **1/8" = 1'-0"**

Designer: **Brandon M. Newton**

Drawn By: **Brandon M. Newton**



Disclaimer:
 Drawings are only meant only to illustrate ideas and are not to be used for construction. The designer must evaluate and stamp by a certified technical director before construction. The designer does not assume any liability for structural integrity in the designs. The company selected to build the designs will assume all liability to its structural integrity and related consumer, crew and performer safety.

Brandon M. Newton
 Scenic Designer Signature

Venue: **Jeanine Larson Dobbins Conservatory**

Stage: **Bedell Theatre**

Director: **Kitt Lavoie**

Technical Director: **L. Andrew Lopez & Brandon M. Newton**

GUYS & DOLLS

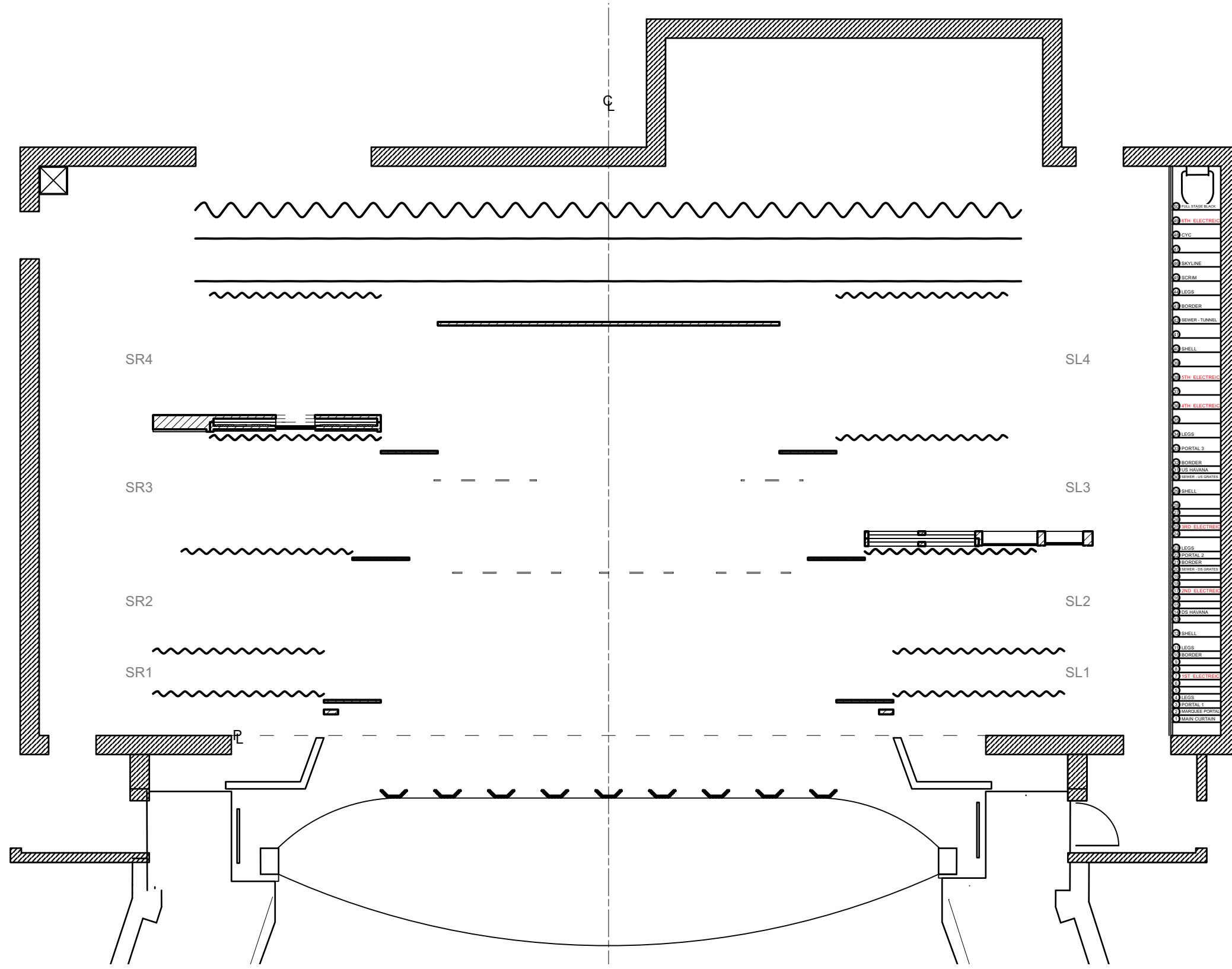
Sheet Title: **A2S2: Off-Broadway 5**

Date: **August 7, 2021**

Designer: **Brandon M. Newton**

Scale: **1/8" = 1'-0"**

Drawn By: **Brandon M. Newton**



Disclaimer:
 Drawings are only meant only to illustrate ideas and are not to be used for construction. The designer does not assume any liability for structural integrity in the designs. The company selected to build the designs will assume all liability to its structural integrity and related consumer, crew and performer safety.

Scenic Designer Signature

Venue: **Jeanine Larson Dobbins Conservatory**

Stage: **Bedell Theatre**

Director: **Kitt Lavoie**

Technical Director: **L. Andrew Lopez & Brandon M. Newton**

GUYS & DOLLS

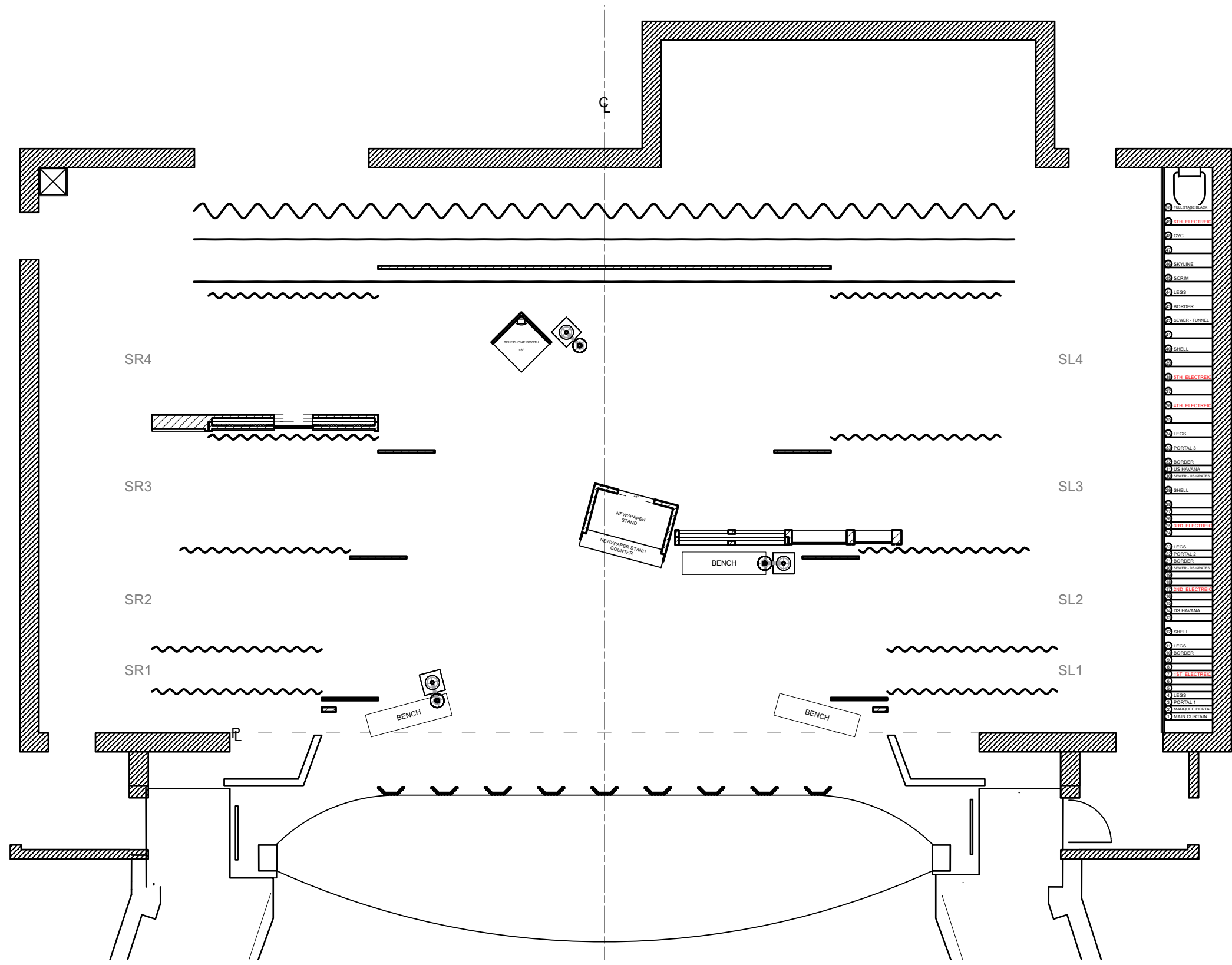
Sheet Title: **A2S3: Sewer**

Date: **August 7, 2021**

Scale: **1/8" = 1'-0"**

Designer: **Brandon M. Newton**

Drawn By: **Brandon M. Newton**



Disclaimer:
 Drawings are only meant only to illustrate ideas and are not to be used for construction. The designer does not assume any liability for structural integrity in the designs. The company selected to build the designs will assume all liability to its structural integrity and related consumer, crew and performer safety.

Brandon M. Newton
 Scenic Designer Signature

Venue: **Jeanine Larson Dobbins Conservatory**

Stage: **Bedell Theatre**

Director: **Kitt Lavoie**

Technical Director: **L. Andrew Lopez & Brandon M. Newton**

GUYS & DOLLS

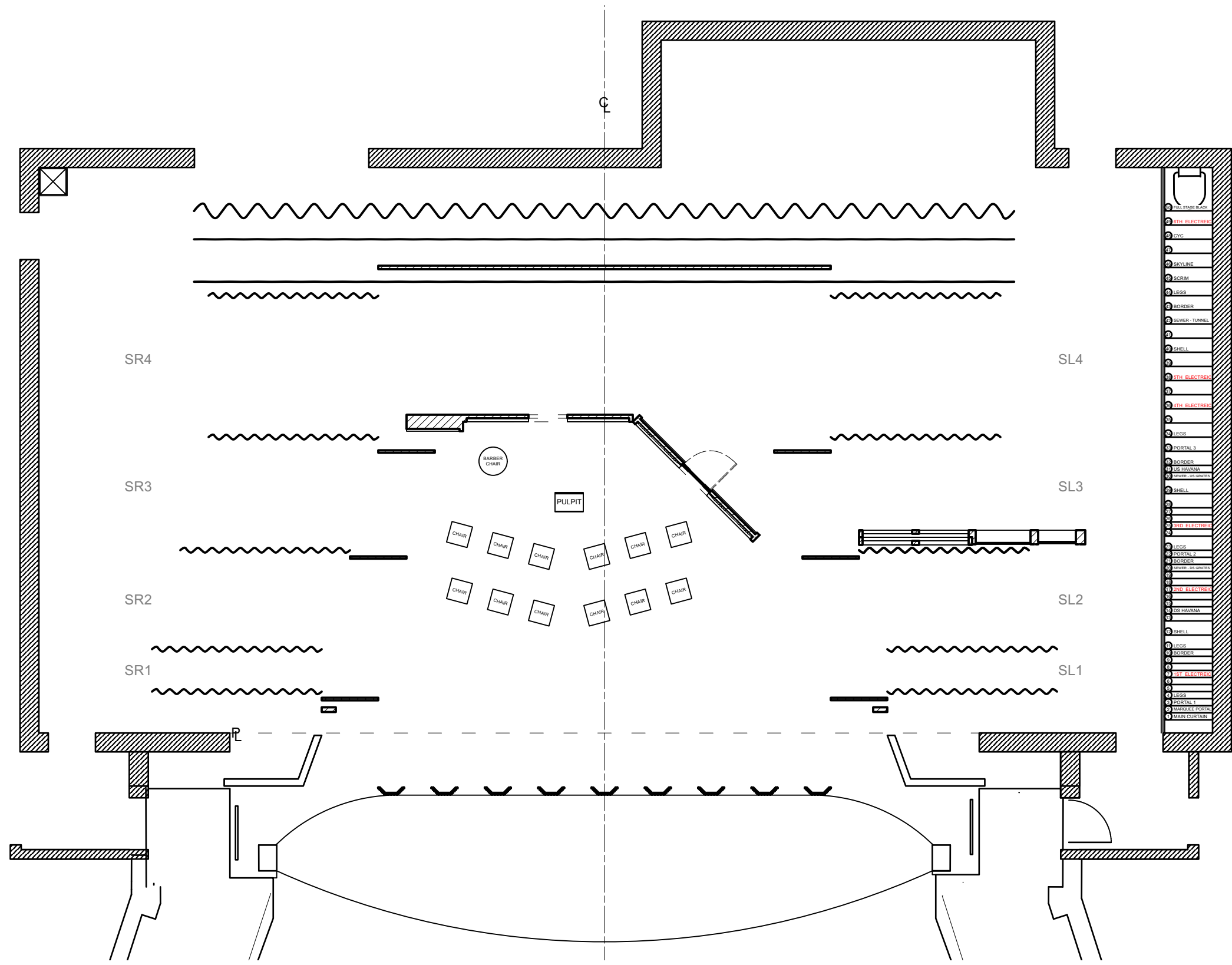
Sheet Title: **A2S4: Off-Broadway 6**

Date: **August 7, 2021**

Scale: **1/8" = 1'-0"**

Designer: **Brandon M. Newton**

Drawn By: **Brandon M. Newton**



Disclaimer:
 Drawings are only meant only to illustrate ideas and are not intended for construction. The designer does not assume any liability for structural integrity in the designs. The company selected to build the designs will assume all liability to its structural integrity and related consumer, crew and performer safety.

Scenic Designer Signature

Venue: **Jeanine Larson Dobbins Conservatory**

Stage: **Bedell Theatre**

Director: **Kitt Lavoie**

Technical Director:
L. Andrew Lopez & Brandon M. Newton

GUYS & DOLLS

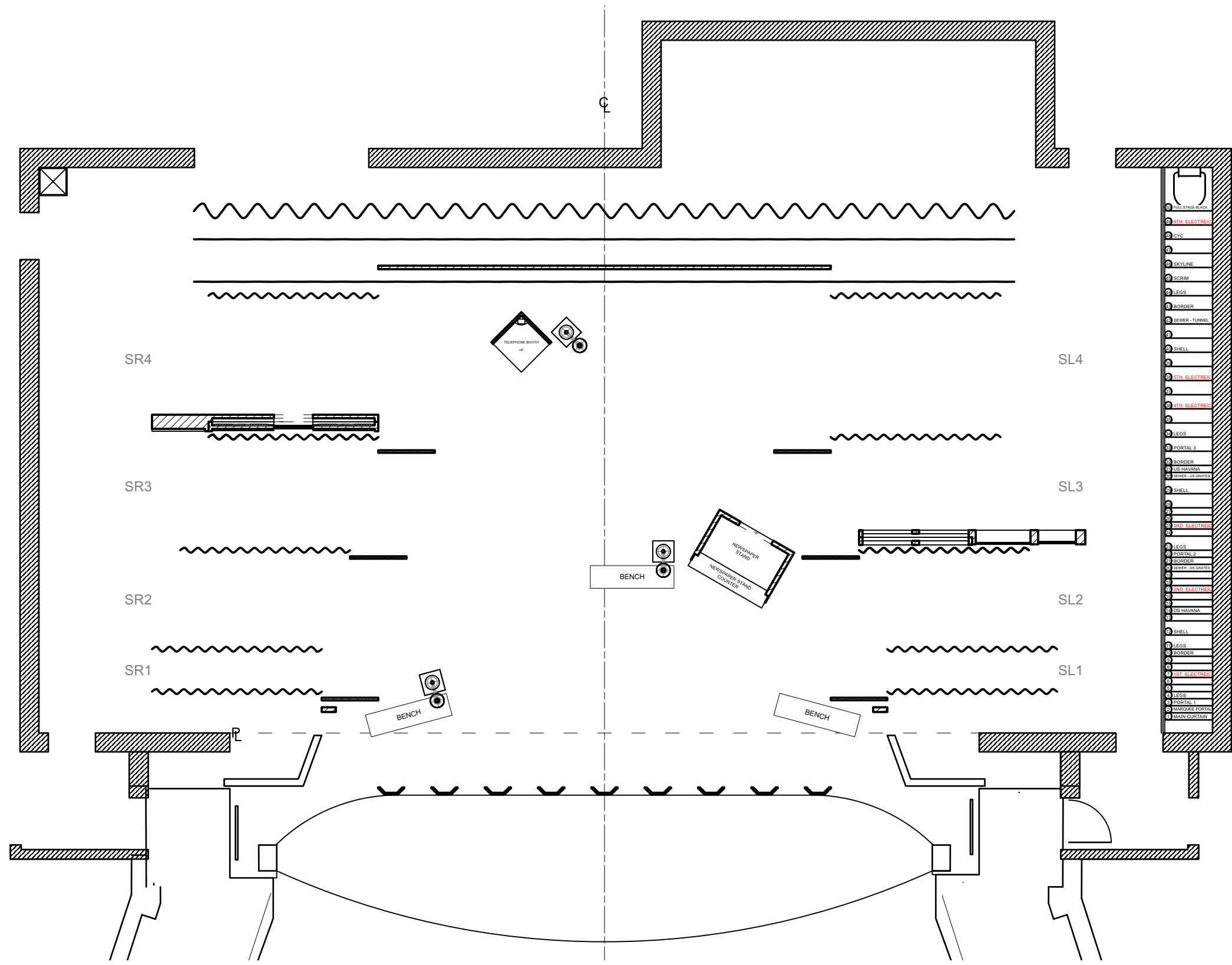
Sheet Title: **A2S5: Mission Interior 2**

Date: **August 7, 2021**

Designer: **Brandon M. Newton**

Scale: **1/8" = 1'-0"**

Drawn By: **Brandon M. Newton**



Disclaimer:
 Drawings are only meant only to illustrate ideas and are not to be used for construction. The designer does not assume any liability for structural integrity in the designs. The company selected to build the designs will assume all liability to its structural integrity and related consumer, crew and performer safety.

Scenic Designer Signature

Venue: **Jeanine Larson Dobbins Conservatory**

Stage: **Bedell Theatre**

Director: **Kitt Lavoie**

Technical Director: **L. Andrew Lopez & Brandon M. Newton**

GUYS & DOLLS

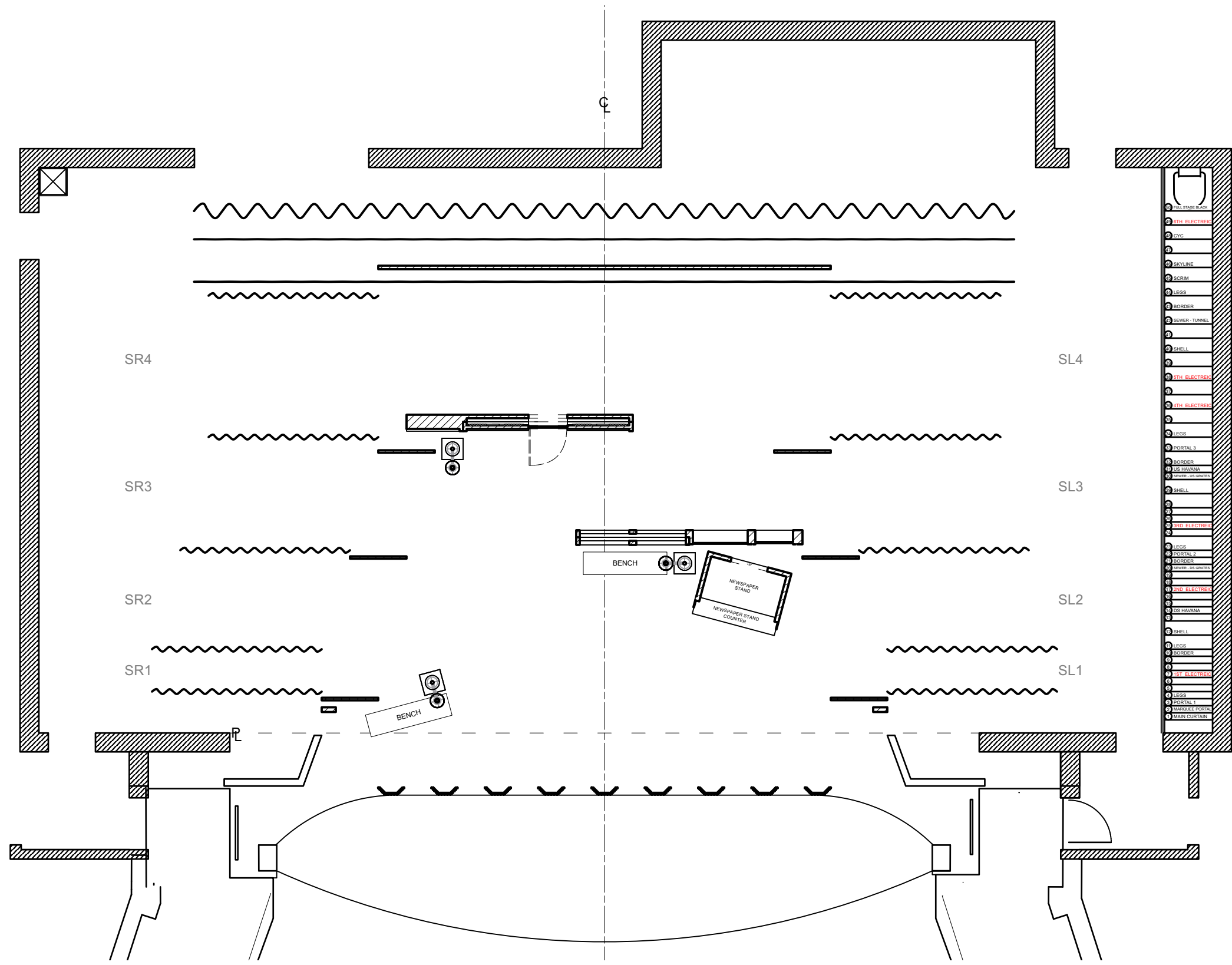
Sheet Title: **A2S6: Off-Broadway 7**

Date: **August 7, 2021**

Designer: **Brandon M. Newton**

Scale: **1/8" = 1'-0"**

Drawn By: **Brandon M. Newton**



Disclaimer:
 Drawings are only meant only to illustrate ideas and are not to be used for construction. The designer does not assume any liability for structural integrity in the designs. The company selected to build the designs will assume all liability to its structural integrity and related consumer, crew and performer safety.

Brandon M. Newton
 Scenic Designer Signature

Venue: **Jeanine Larson Dobbins Conservatory**

Stage: **Bedell Theatre**

Director: **Kitt Lavoie**

Technical Director: **L. Andrew Lopez & Brandon M. Newton**

GUYS & DOLLS

Sheet Title: **A2S7: Off-Broadway 8**

Date: **August 7, 2021**

Scale: **1/8" = 1'-0"**

Designer: **Brandon M. Newton**

Drawn By: **Brandon M. Newton**

Sheet Number: **GP-17**

of 18